



Delivering Excellence Every Day



**MIAMI-DADE
CORRECTIONS & REHABILITATION DEPARTMENT**

**INMATE GRIEVANCE REPORT
FY 2010-2011
FOURTH QUARTER (Q4)**

**TIMOTHY P. RYAN
DIRECTOR**



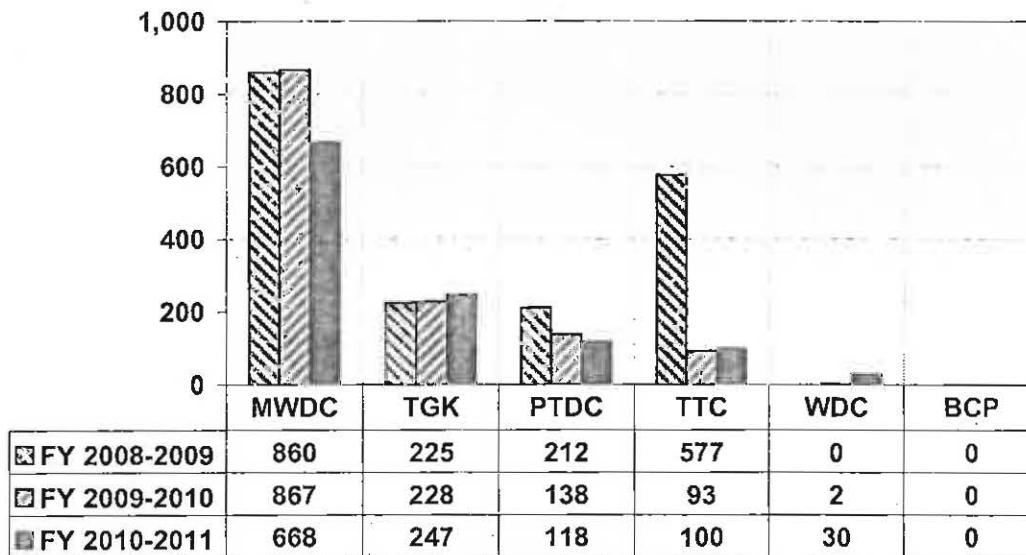
**INMATE GRIEVANCE REPORT BRIEFING
FY 2010-2011 (Q1-Q4)**

For FY 2010-2011 (Q1-Q4), there were 1,163 inmate grievances reported (an average of 3 per day and 97 per month). Inmate grievances decreased by -12% (-165) compared to FY 2009-2010 Q1-Q4 (1,328), and decreased by -38% (-711) compared to FY 2008-2009 Q1-Q4 (1,874).

For FY 2010-2011 Q4, there were 315 inmate grievances reported (an average of 3 per day and 105 per month). In comparison among fiscal quarters, inmate grievances in Q4 (315) shows a decrease of -5% (-17) when compared to total inmate grievances in Q3 (332), an increase of 16% (44) when compared to total inmate grievances in Q2 (271), an increase of 29% (70) when compared to total inmate grievances in Q1 (245).

In Q4, September had the most grievances reported with 112 (7% over the monthly average 105), while July had the least with 96 (-9% under the monthly average 105).

**DEPARTMENT WIDE INMATE GRIEVANCES
ANNUAL COMPARISON**



Percent of total grievances Q1-Q4 (1,163) by facilities are as follows:

Facility	# of Grievances	% Grievances	% ADP
MWDC	668	57.4%	37%
TGK	247	21.2%	16%
PTDC	118	10.1%	22%
TTC	100	8.6%	19%
WDC	30	2.6%	5%
BCP	0	0.0%	1%



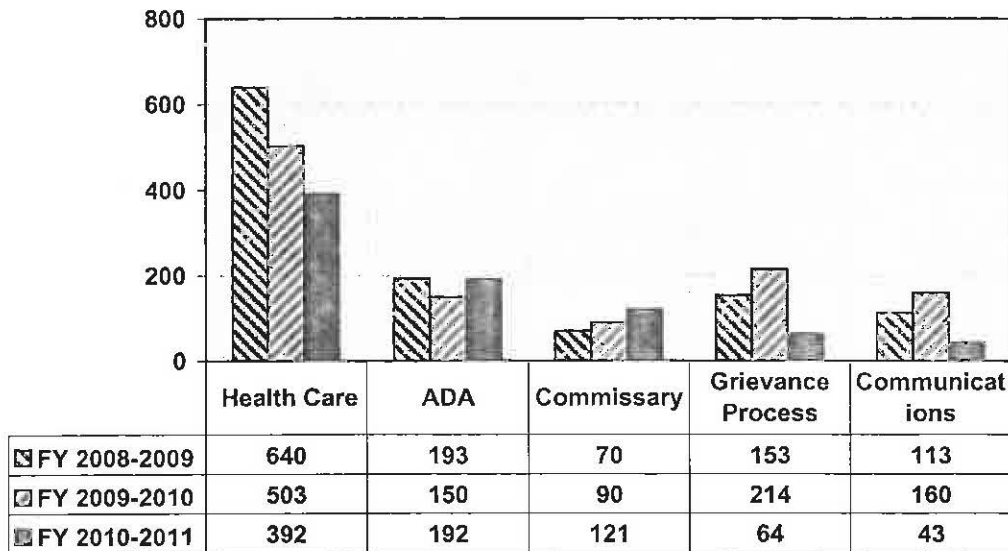
**MIAMI-DADE
CORRECTIONS AND REHABILITATION DEPARTMENT**



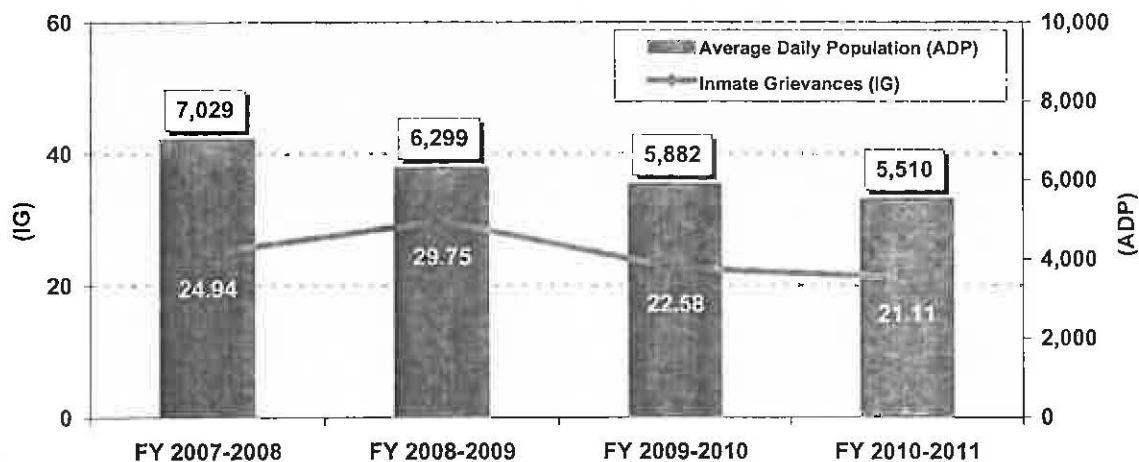
The top five category types of grievances reported in (Q1-Q4) are as follows:

- | | |
|--------------------------|------------------------------|
| 1) Health Care 34% (392) | 4) Grievance Process 6% (64) |
| 2) ADA 17% (192) | 5) Communications 4% (43) |
| 3) Commissary 10% (121) | |

**DEPARTMENT WIDE INMATE GRIEVANCES
TOP FIVE TYPES ANNUAL COMPARISON**



**DEPARTMENT WIDE INMATE GRIEVANCES
AVERAGE DAILY POPULATION (ADP) VS.
INMATE GRIEVANCES PER 100 INMATES (IG)**



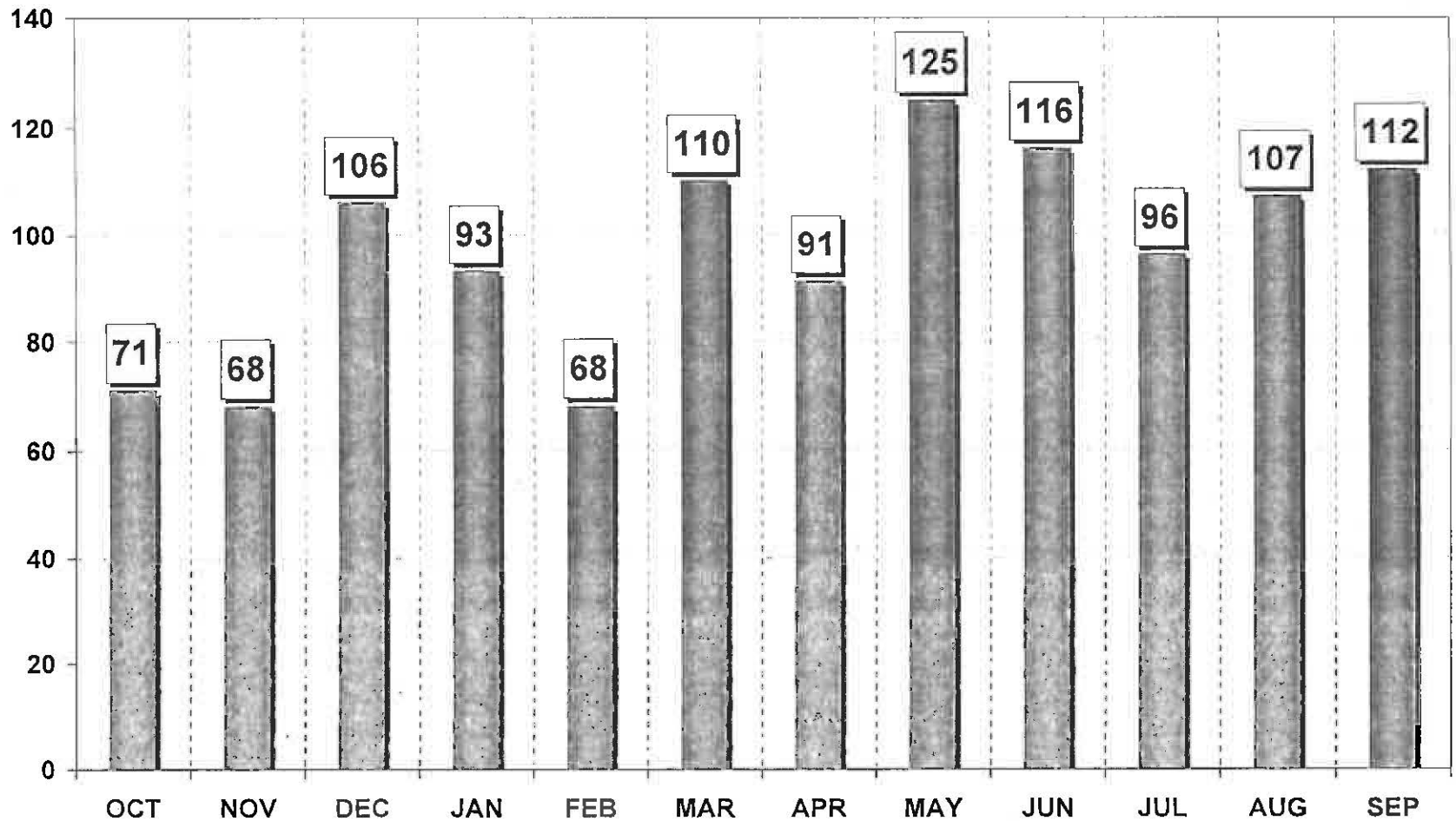
Source: Primary Indicator Report Network (12/06/11)



Miami-Dade Corrections and Rehabilitation Department DEPARTMENT-WIDE



INMATE GRIEVANCES FY 2010-2011 Q1-Q4

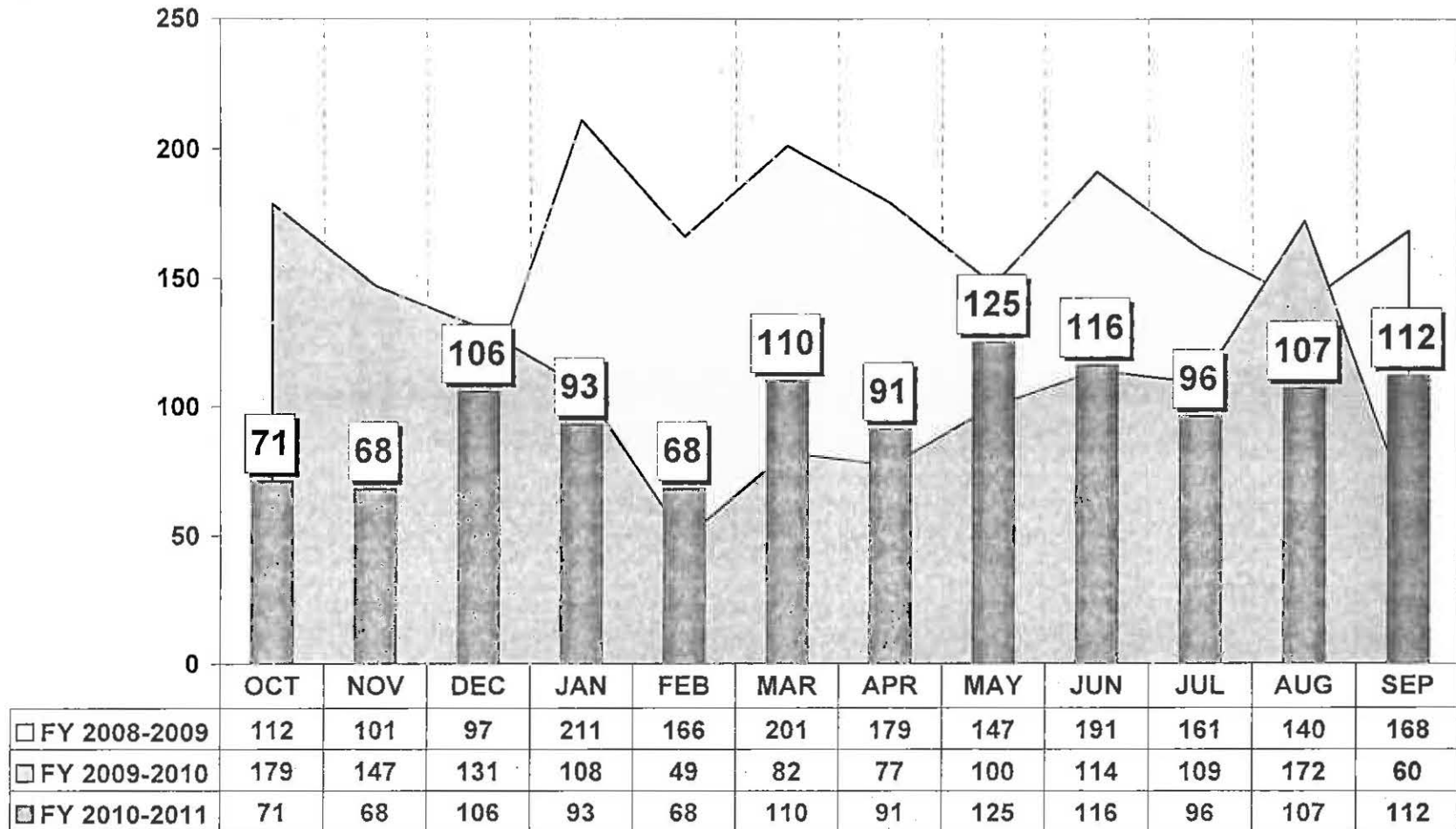




Miami-Dade Corrections and Rehabilitation Department DEPARTMENT-WIDE



INMATE GRIEVANCES YEARLY COMPARISON



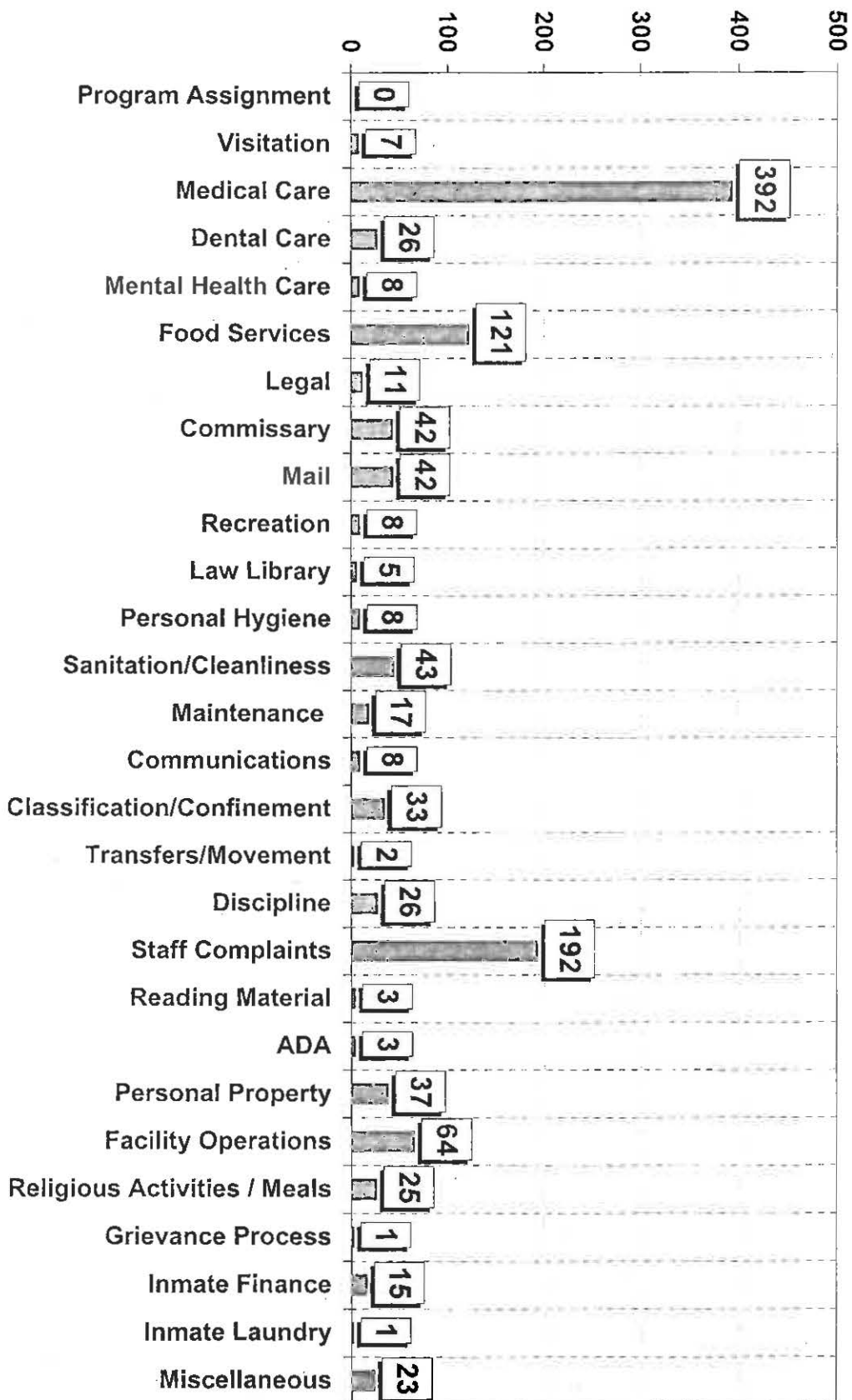


Timothy P. Ryan
Director

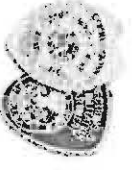
Miami-Dade Corrections and Rehabilitation Department DEPARTMENT-WIDE



INMATE GRIEVANCE BY TYPE FY 2010-2011 Q1-Q4



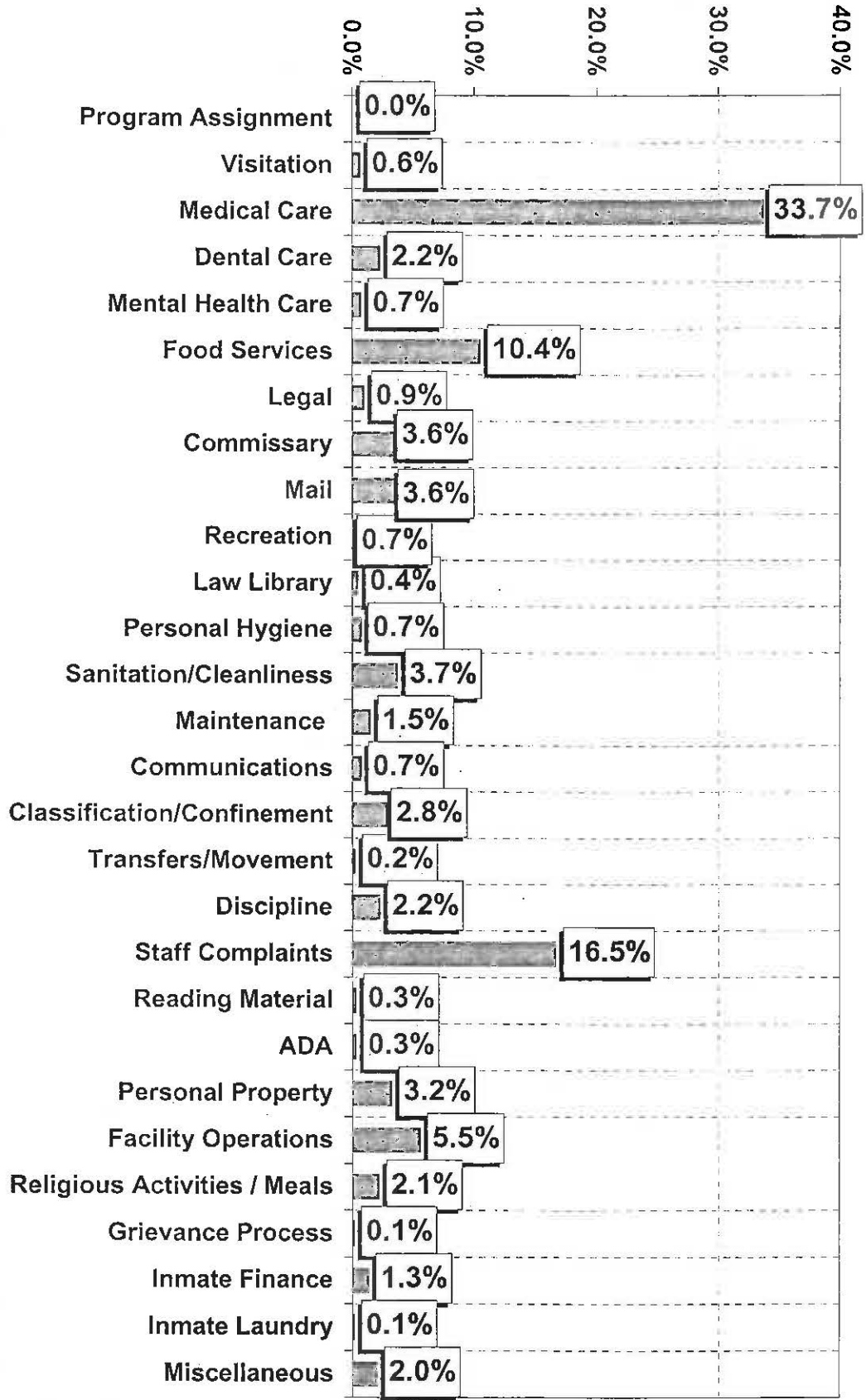
Timothy P. Ryan
Director



Miami-Dade Corrections and Rehabilitation Department DEPARTMENT-WIDE



PERCENTAGE OF INMATE GRIEVANCES BY TYPE
FY 2010-2011 Q1-Q4



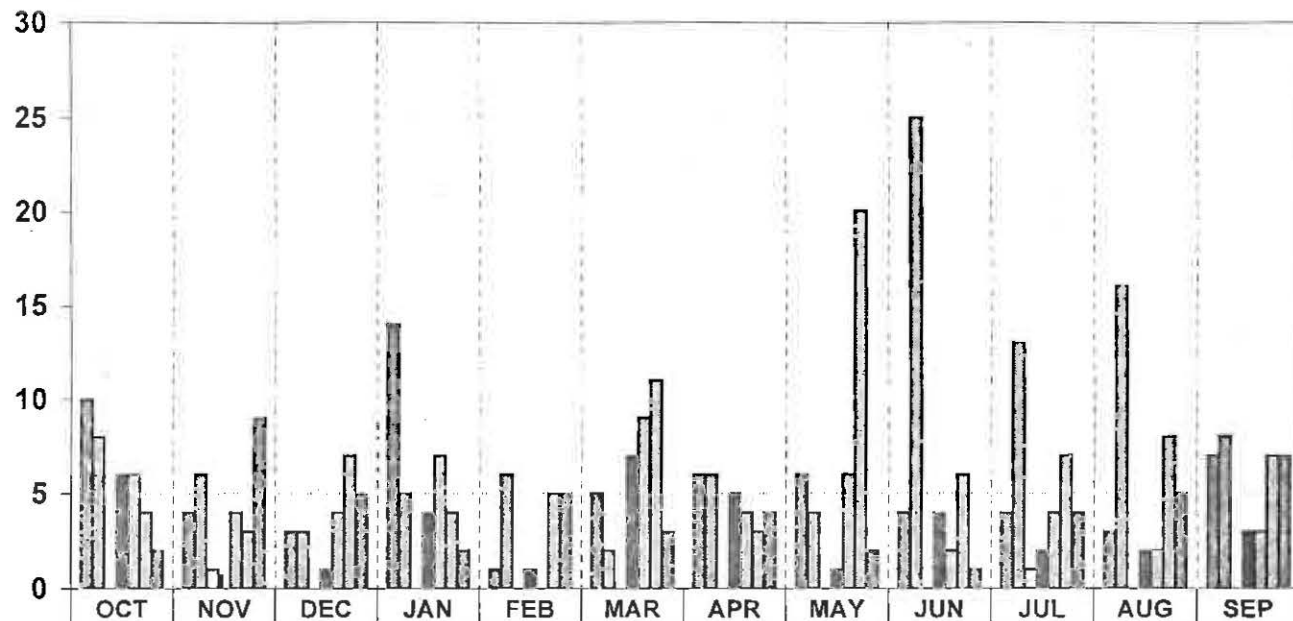


Timothy F. Ryan
Director

Miami-Dade Corrections and Rehabilitation Department



MEDICAL CARE SUB-CATEGORIES INMATE GRIEVANCES FY 2010-2011 Q1-Q4



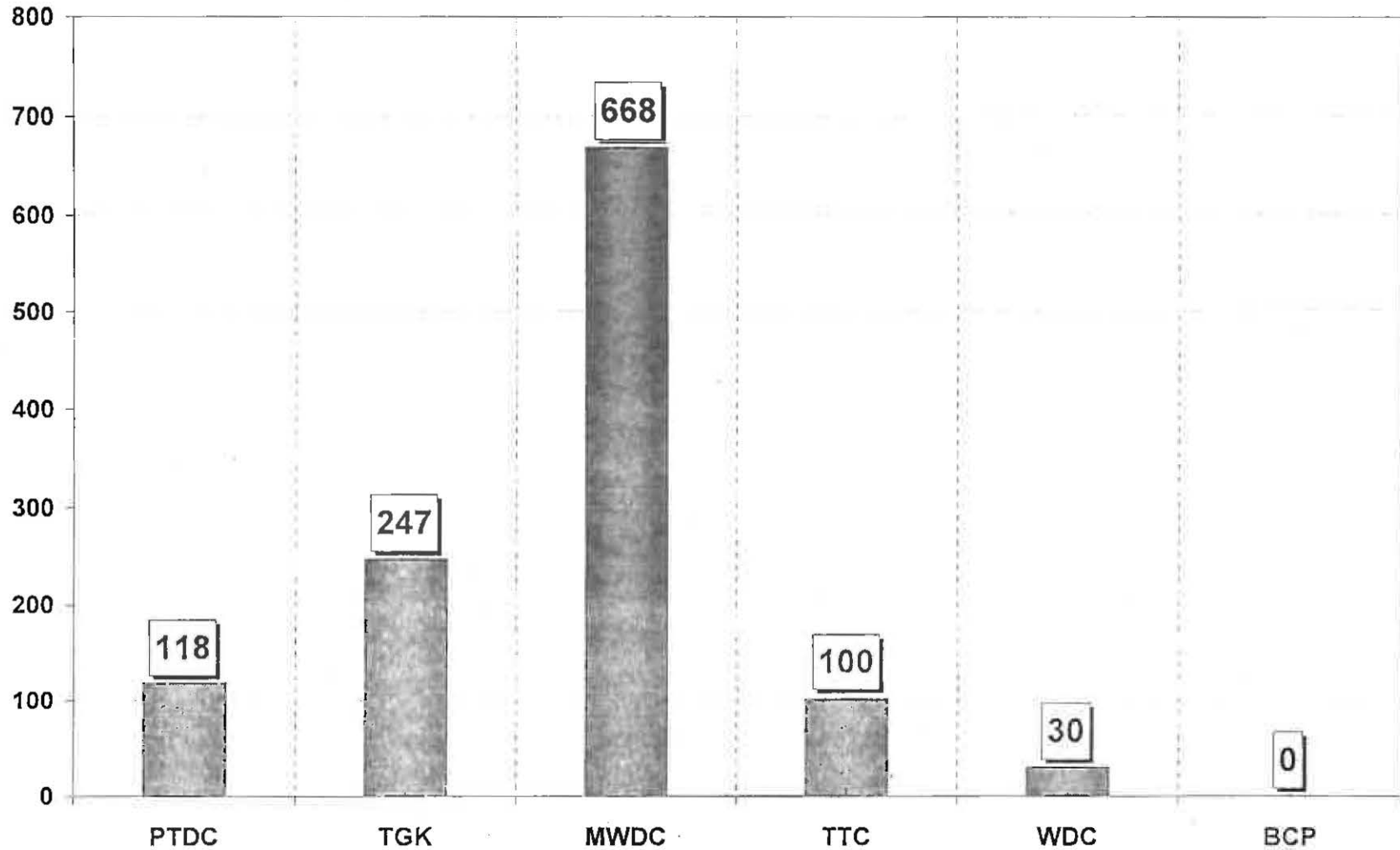
	OCT	NOV	DEC	JAN	FEB	MAR	APR	MAY	JUN	JUL	AUG	SEP
■ Medication	10	4	3	14	1	5	6	6	4	4	3	7
■ Sick Call	8	6	3	5	6	2	6	4	25	13	16	8
□ Chest Pains	0	1	0	0	0	0	0	0	0	1	0	0
■ Medical Diet	6	0	1	4	1	7	5	1	4	2	2	3
■ Complaints Against Medical Staff	6	4	4	7	0	9	4	6	2	4	2	3
■ Medical Illness	4	3	7	4	5	11	3	20	6	7	8	7
■ Medical Other	2	9	5	2	5	3	4	2	1	4	5	7



Miami-Dade Corrections and Rehabilitation Department



INMATE GRIEVANCES PER FACILITY FY 2010-2011 Q1-Q4



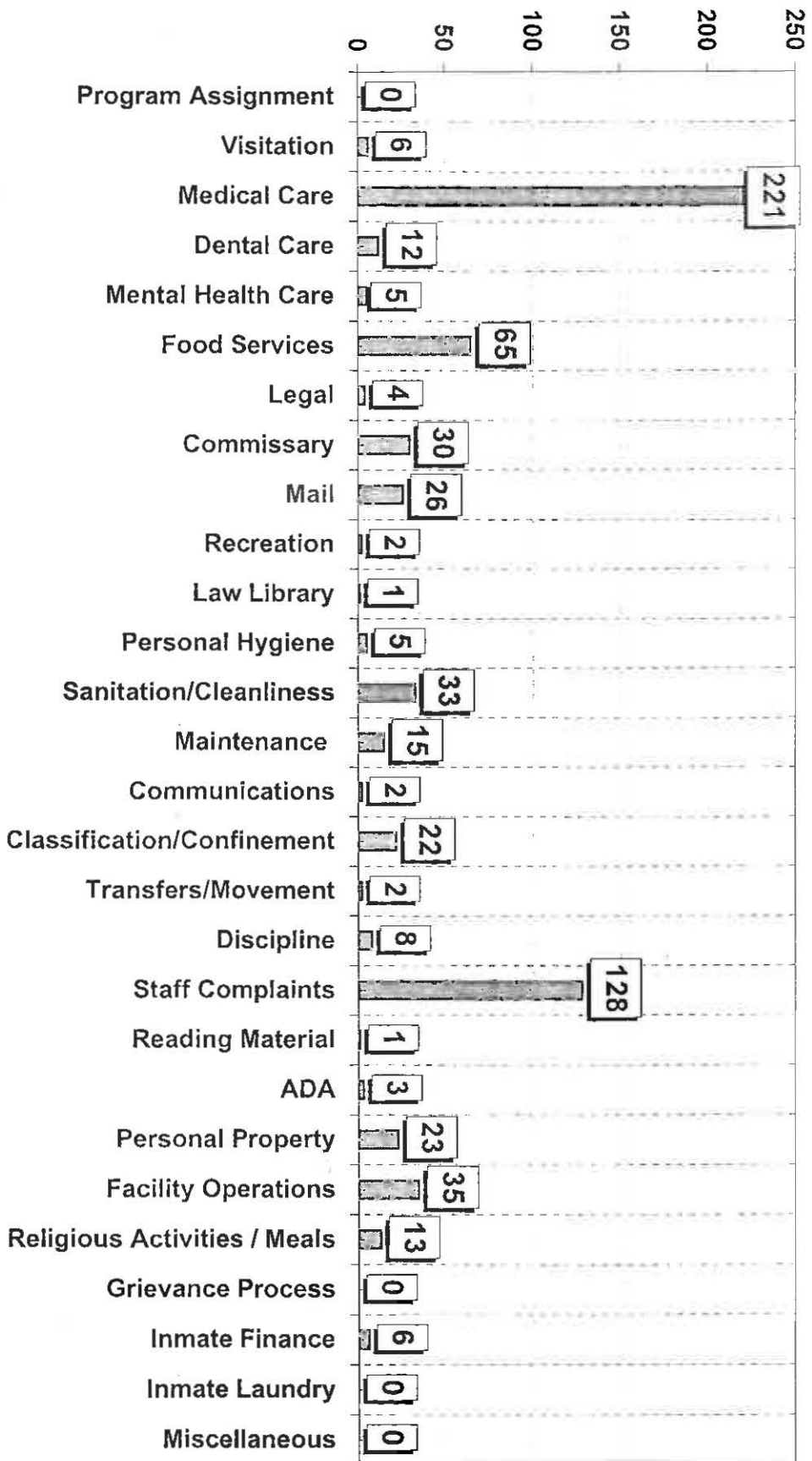


Timothy P. Ryan
Director

Miami-Dade Corrections and Rehabilitation Department METRO WEST DETENTION CENTER



INMATE GRIEVANCES FY 2010-2011 Q1-Q4

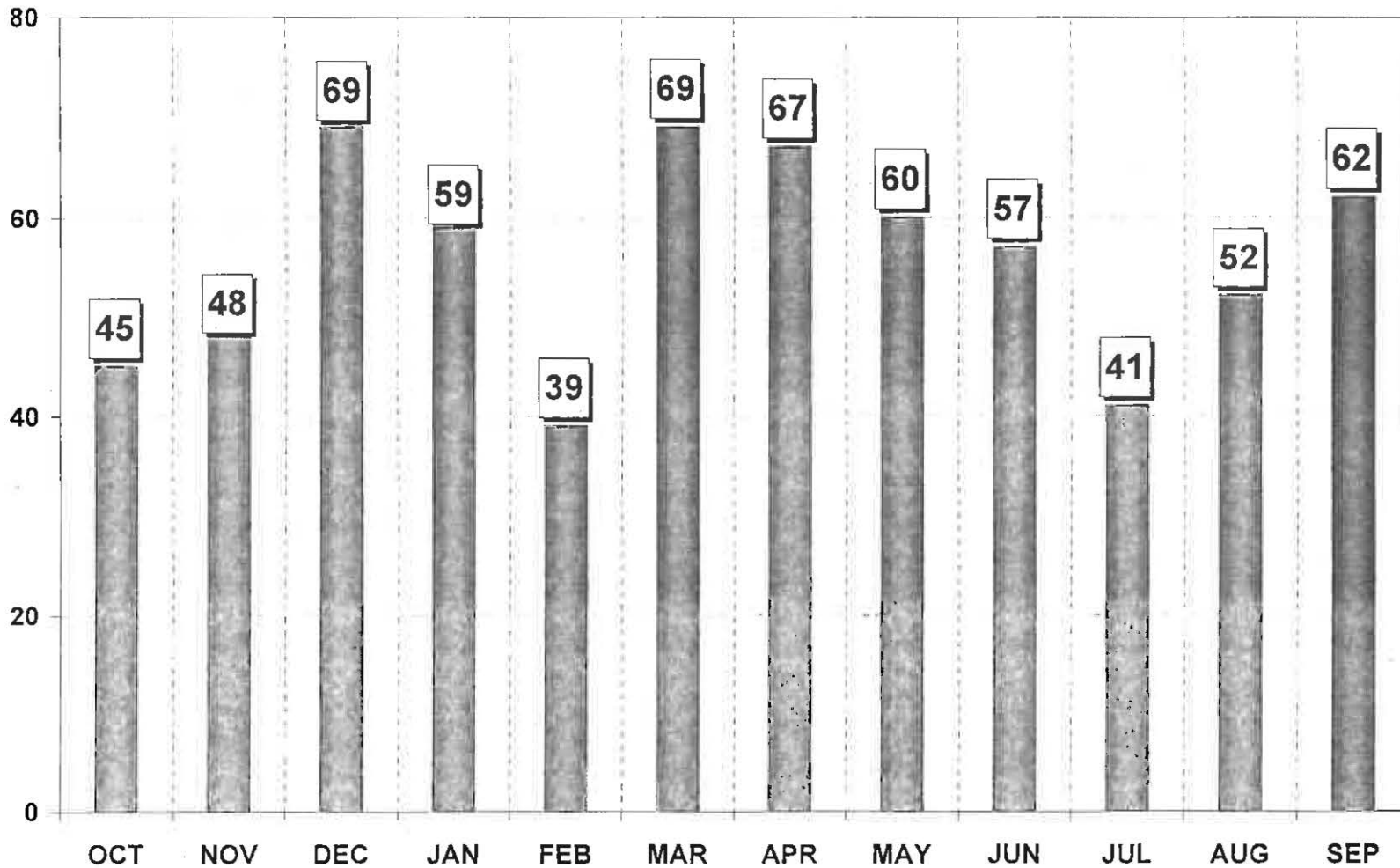




Miami-Dade Corrections and Rehabilitation Department METRO WEST DETENTION CENTER



INMATE GRIEVANCES FY 2010-2011 Q1-Q4



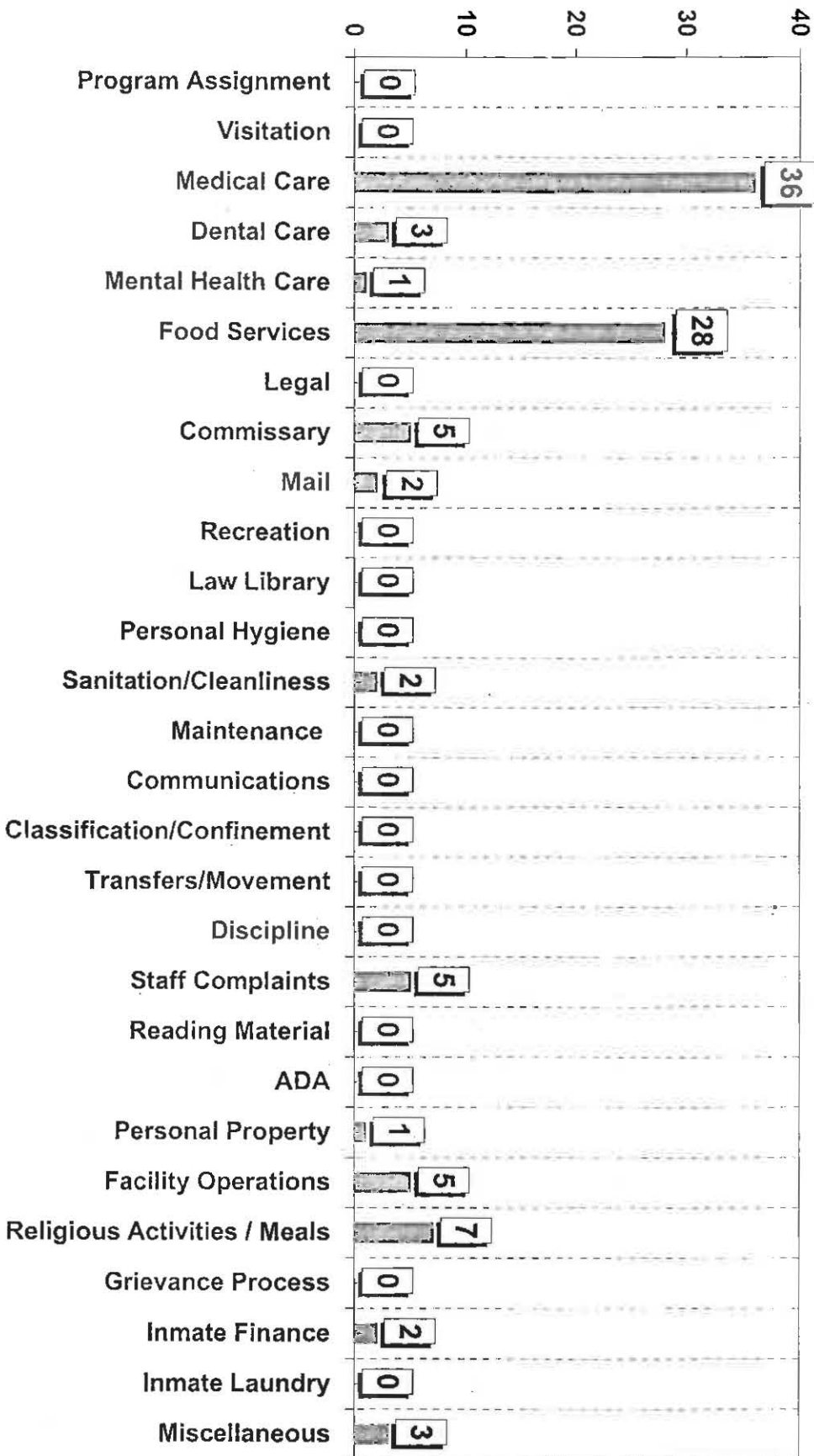


Timothy P. Ryan
Director

Miami-Dade Corrections and Rehabilitation Department TRAINING AND TREATMENT CENTER



INMATE GRIEVANCES FY 2010-2011 Q1-Q4

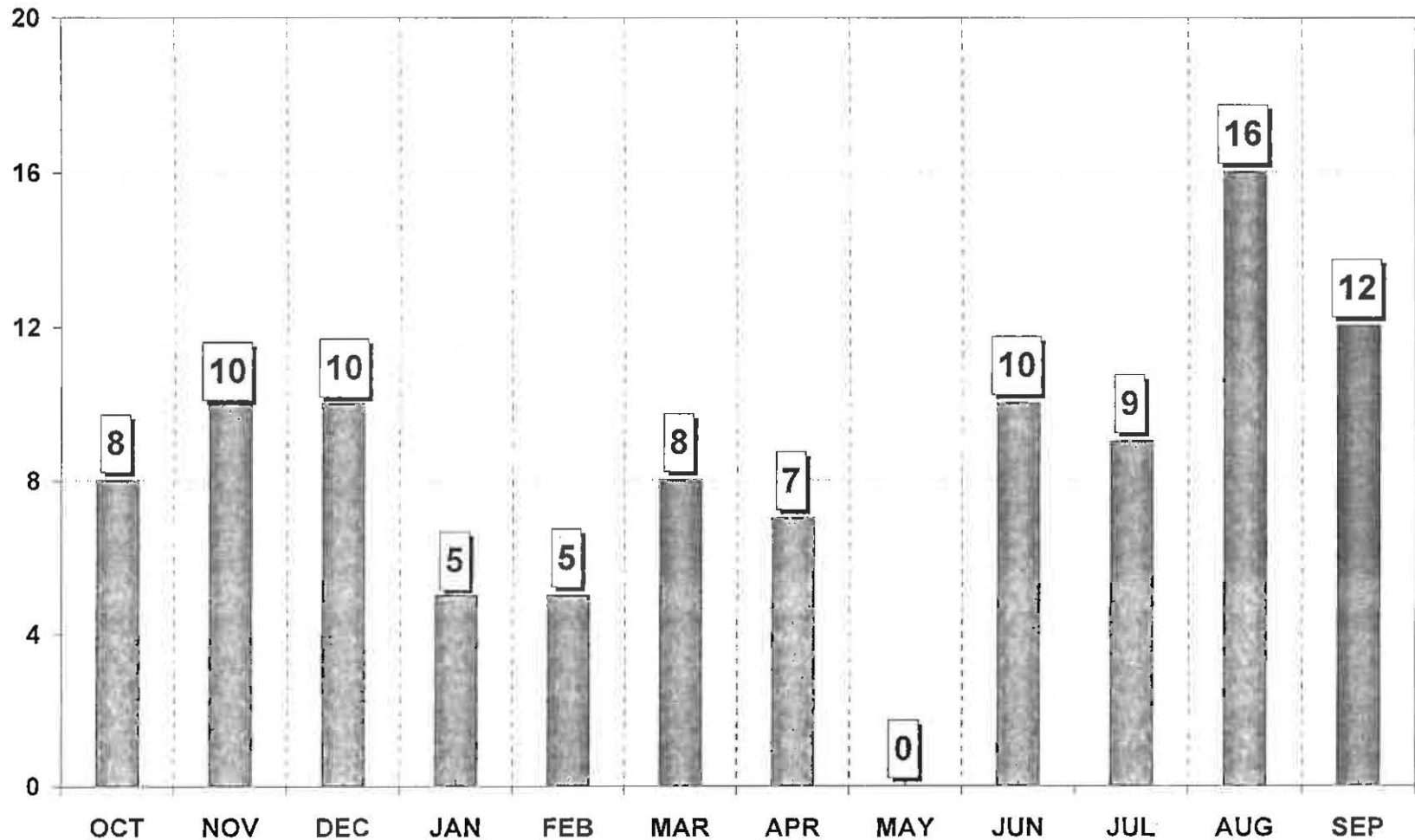




Miami-Dade Corrections and Rehabilitation Department TRAINING AND TREATMENT CENTER



INMATE GRIEVANCES FY 2010-2011 Q1-Q4





Timothy P. Ryan
Director

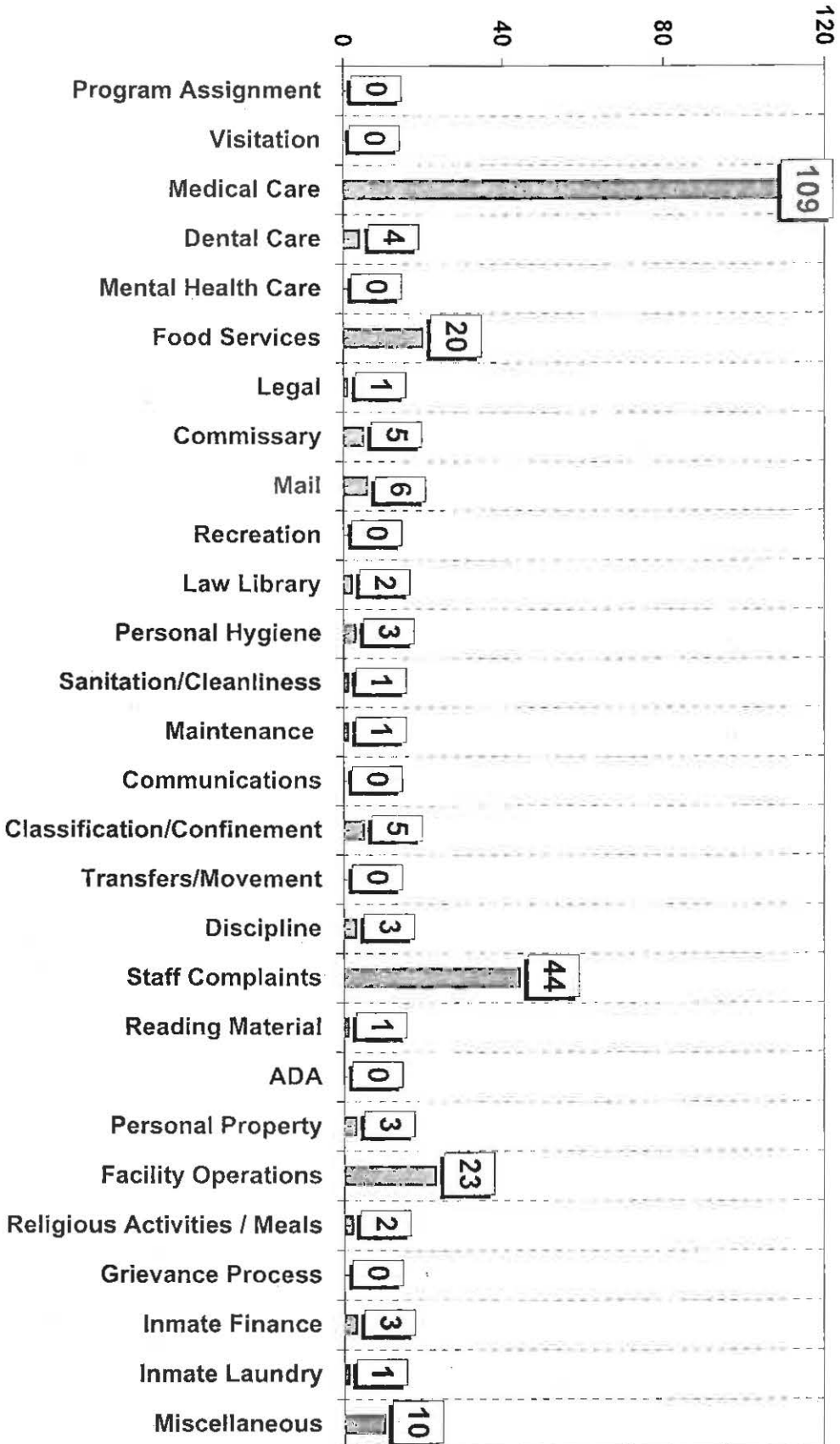
Miami-Dade Corrections and Rehabilitation Department



TURNER GUILFORD KNIGHT CORRECTIONAL CENTER

INMATE GRIEVANCES

FY 2010-2011 Q1-Q4



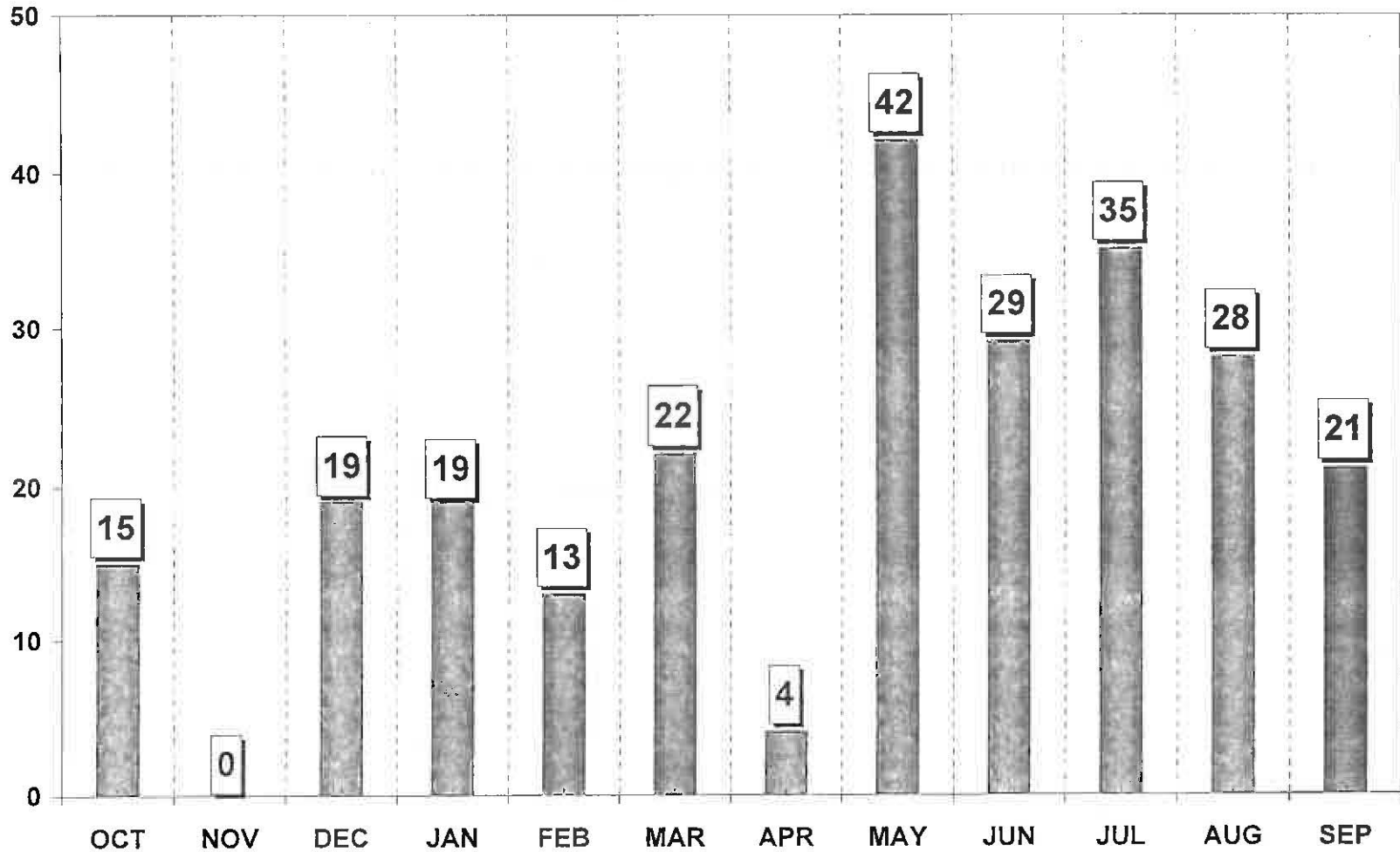


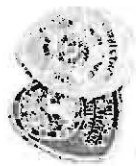
Timothy F. Ryan
Director



Miami-Dade Corrections and Rehabilitation Department TURNER GUILFORD KNIGHT CORRECTIONAL CENTER

INMATE GRIEVANCES FY 2010-2011 Q1-Q4



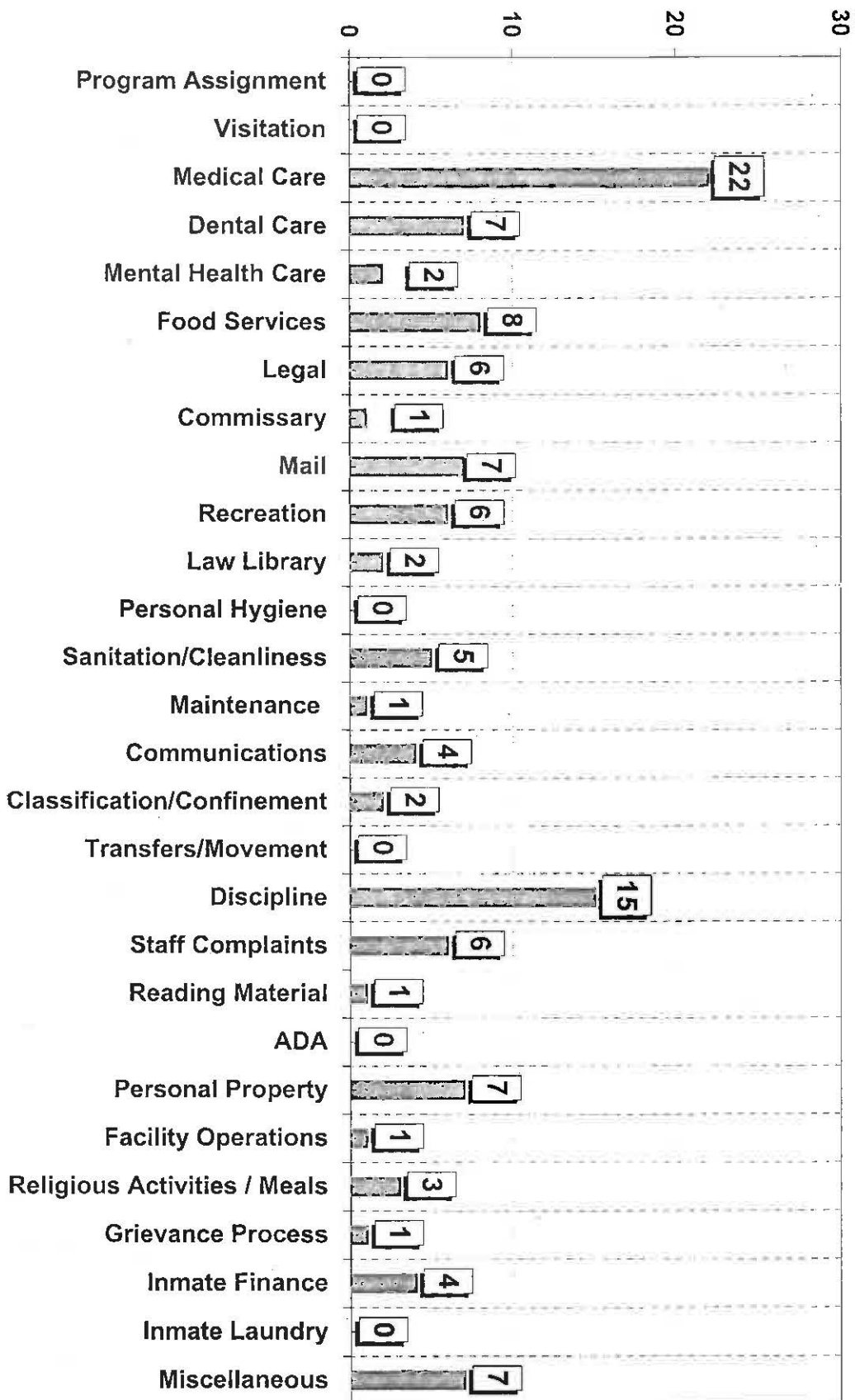


Timothy F. Ryan
Director

Miami-Dade Corrections and Rehabilitation Department PRE-TRIAL DETENTION CENTER



INMATE GRIEVANCES FY 2010-2011 Q1-Q4

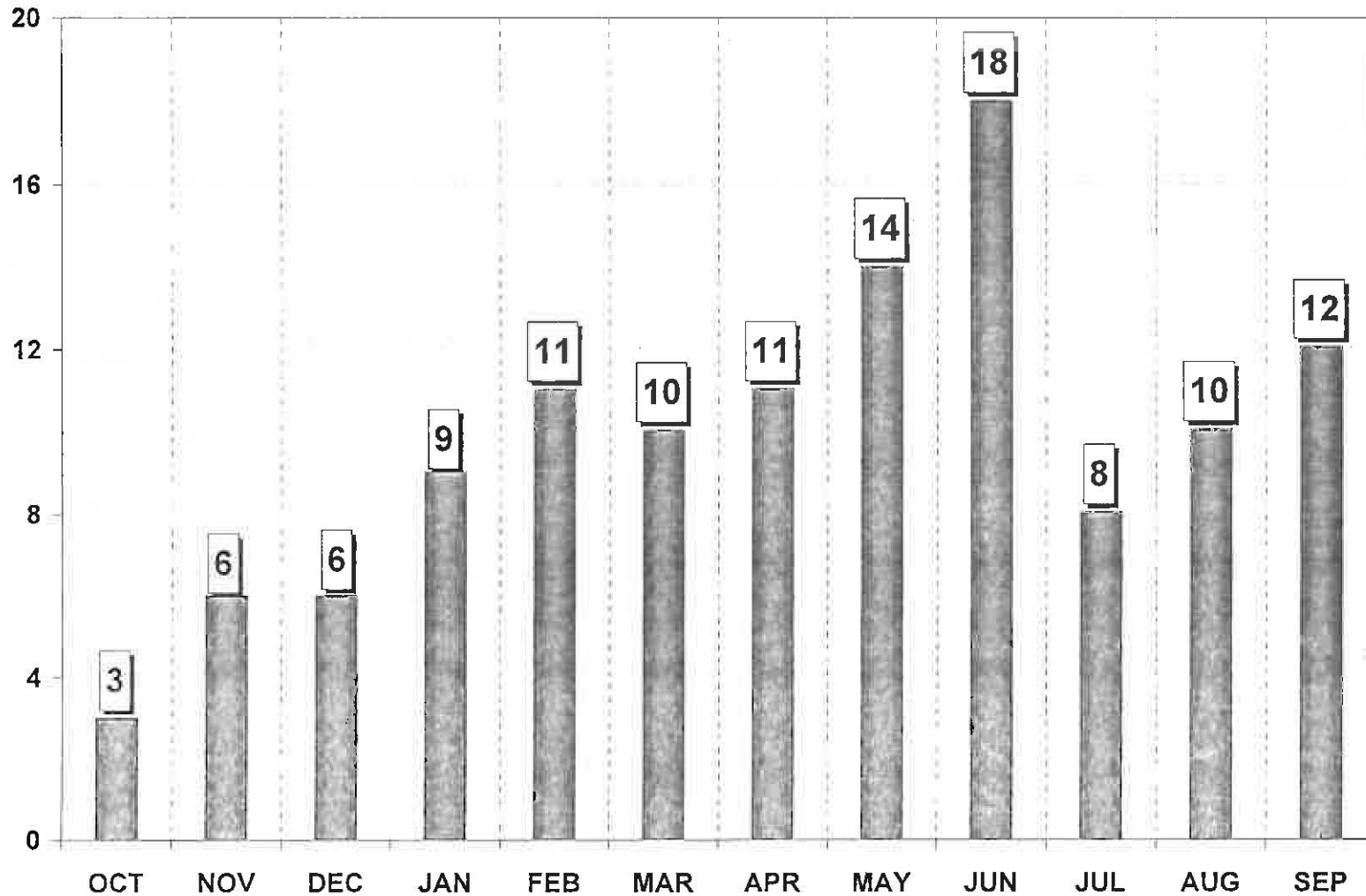




Miami-Dade Corrections and Rehabilitation Department PRE-TRIAL DETENTION CENTER



INMATE GRIEVANCES FY 2010-2011 Q1-Q4



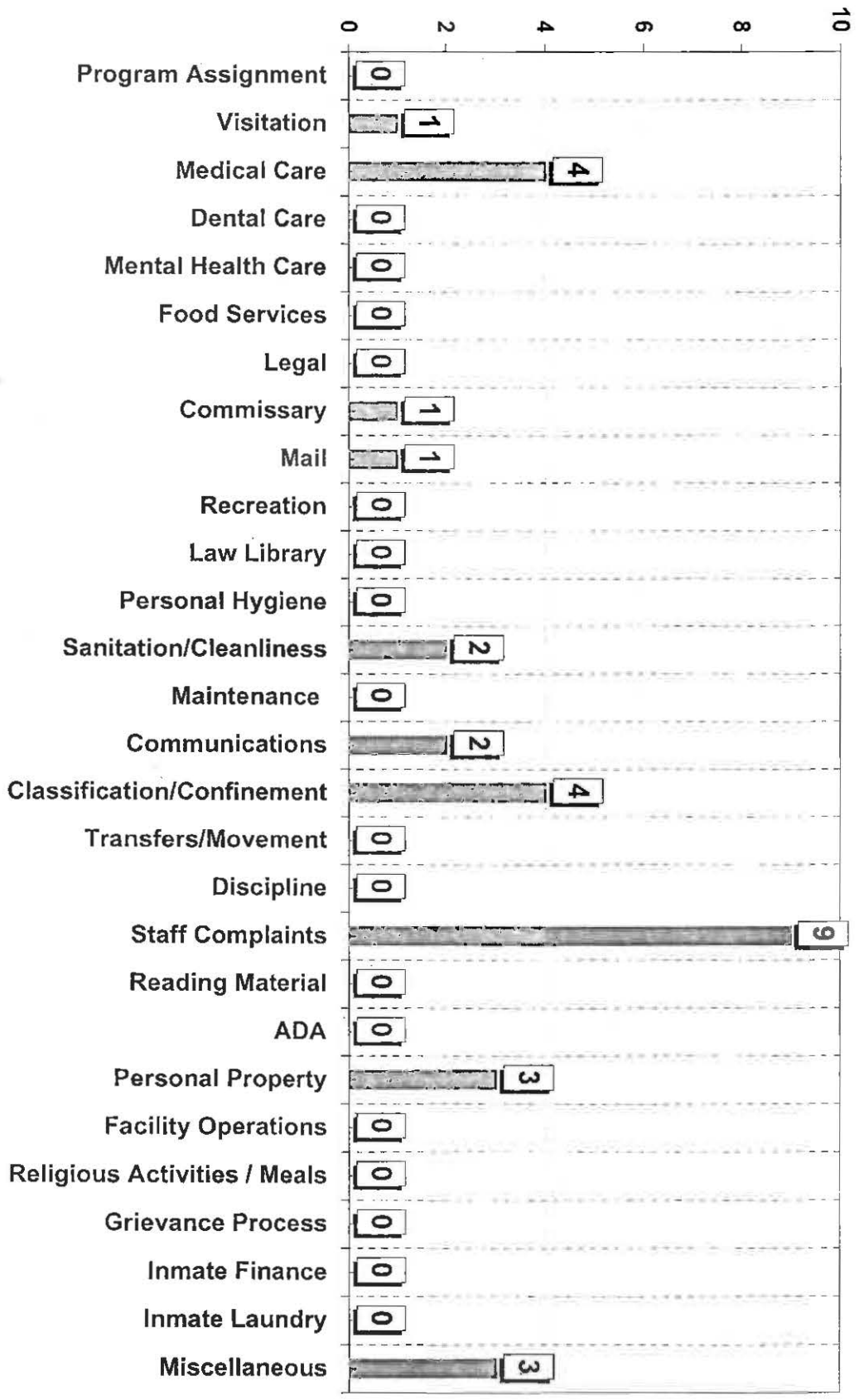


Timothy P. Ryan
Director

Miami-Dade Corrections and Rehabilitation Department WOMEN'S DETENTION CENTER



INMATE GRIEVANCES FY 2010-2011 Q1-Q4

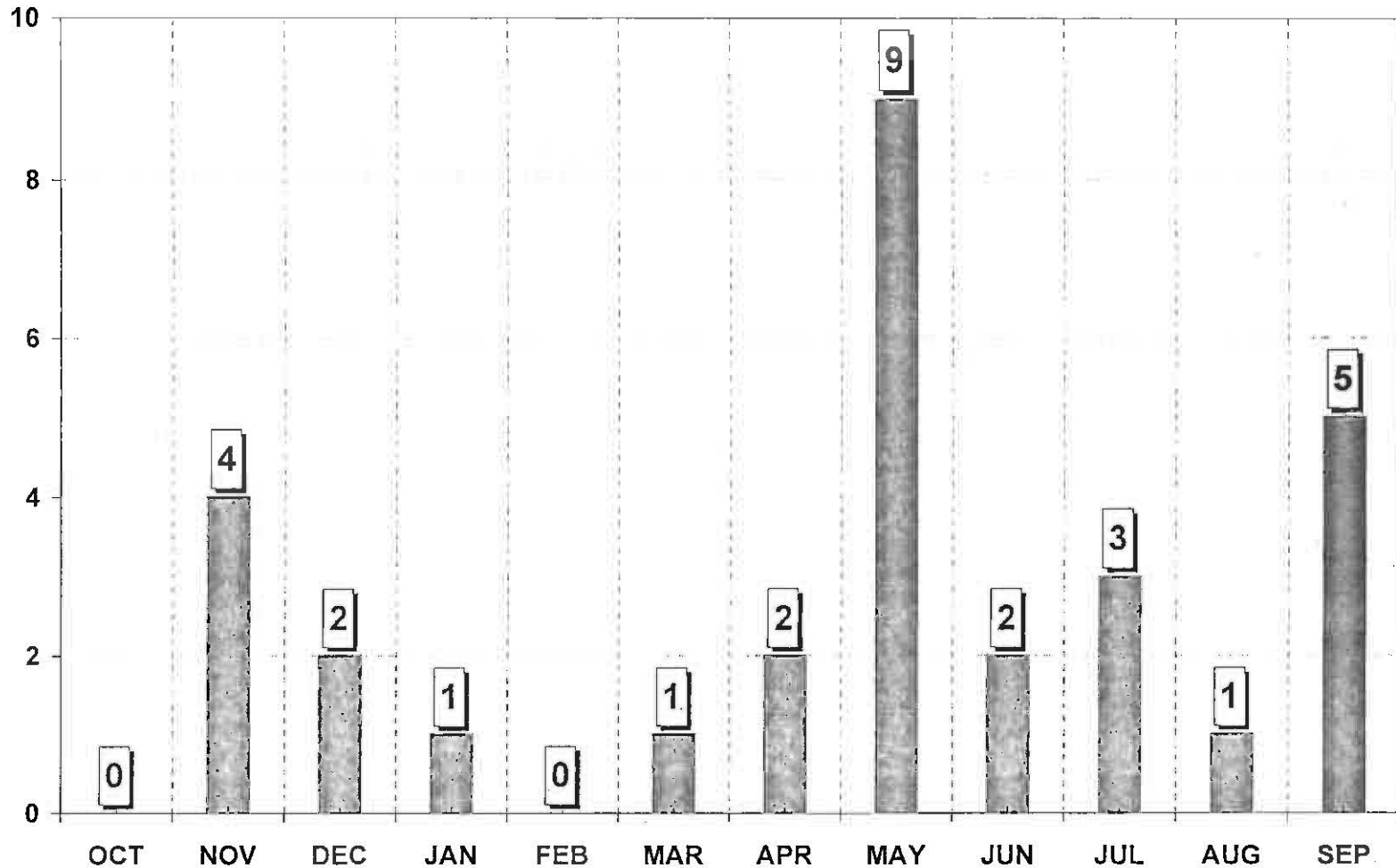




Miami-Dade Corrections and Rehabilitation Department WOMEN'S DETENTION CENTER



INMATE GRIEVANCES FY 2010-2011 Q1-Q4





Timothy P. Ryan
Director

Miami-Dade Corrections and Rehabilitation Department BOOT CAMP PROGRAM



INMATE GRIEVANCES FY 2010-2011 Q1-Q4

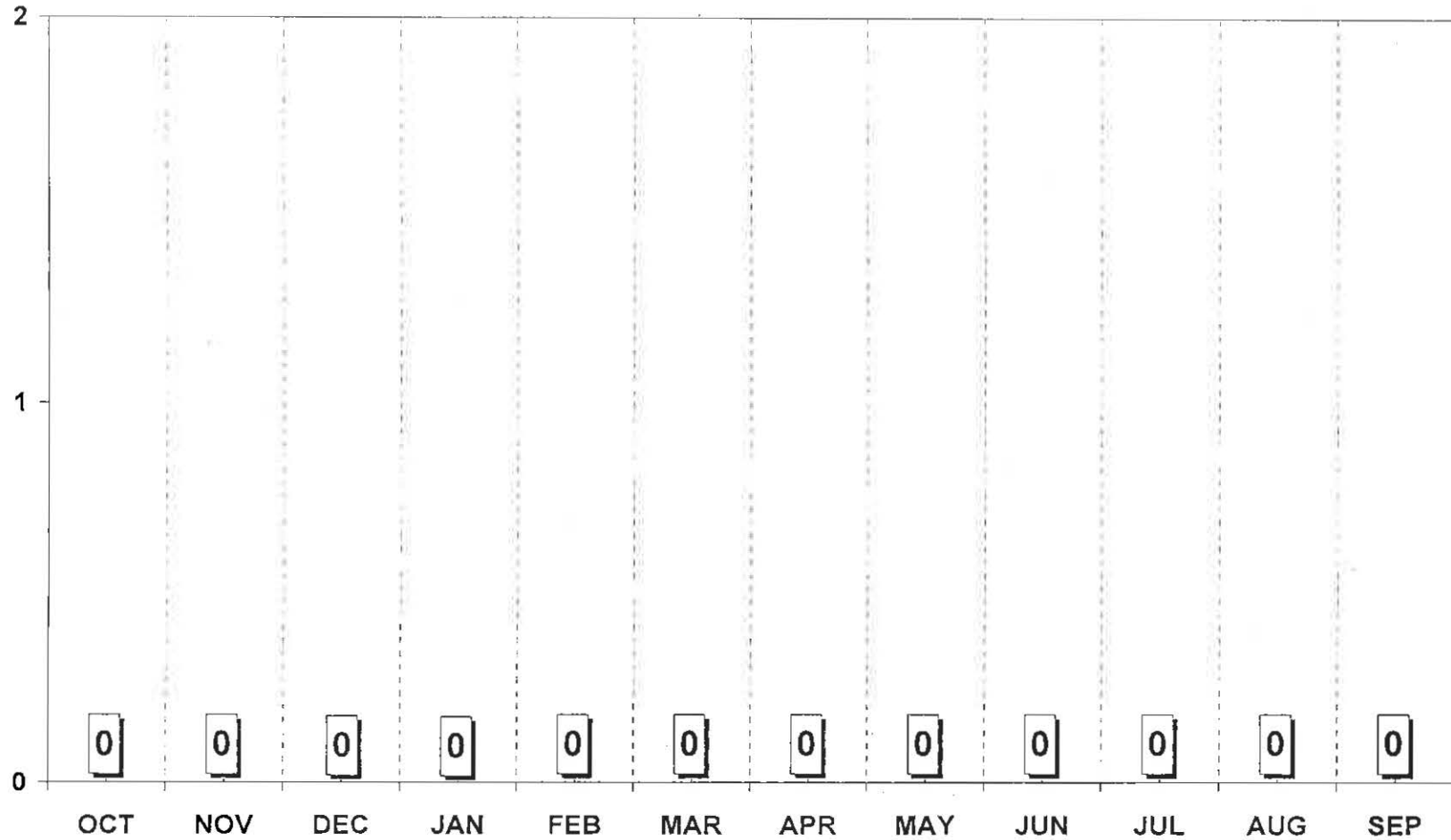
	0	1	2
Program Assignment	0		
Visitation	0		
Medical Care	0		
Dental Care	0		
Mental Health Care	0		
Food Services	0		
Legal	0		
Commissary	0		
Mail	0		
Recreation	0		
Law Library	0		
Personal Hygiene	0		
Sanitation/Cleanliness	0		
Maintenance	0		
Communications	0		
Classification/Confinement	0		
Transfers/Movement	0		
Discipline	0		
Staff Complaints	0		
Reading Material	0		
ADA	0		
Personal Property	0		
Facility Operations	0		
Religious Activities / Meals	0		
Grievance Process	0		
Inmate Finance	0		
Inmate Laundry	0		
Miscellaneous	0		



Miami-Dade Corrections and Rehabilitation Department BOOT CAMP PROGRAM



INMATE GRIEVANCES FY 2010-2011 Q1-Q4





Miami-Dade Corrections and Rehabilitation Department DEPARTMENT-WIDE



INMATE GRIEVANCES PER 100 INMATES FY 2010-2011 Q1-Q4

